

Ameren Puerto Rico Deployment

Mark Birk

May 30, 2018



Hurricane Maria — September 20, 2017



- Puerto Rico is 100 miles long x 35 miles wide (5% of the size of Missouri)
- Approximately 3.5M residents
- As of April 18, 2018, Puerto Rico has lost **3.4 billion** customer-hours of electricity (a major storm in AMO is ~64,000 customer-hours of outage)
- Storm destroyed 80% of the Transmission System
- At the height of the restoration effort there were 5,500 restoration workers
- 1.5 restoration workers per mile
- Tourism is one of their main industries



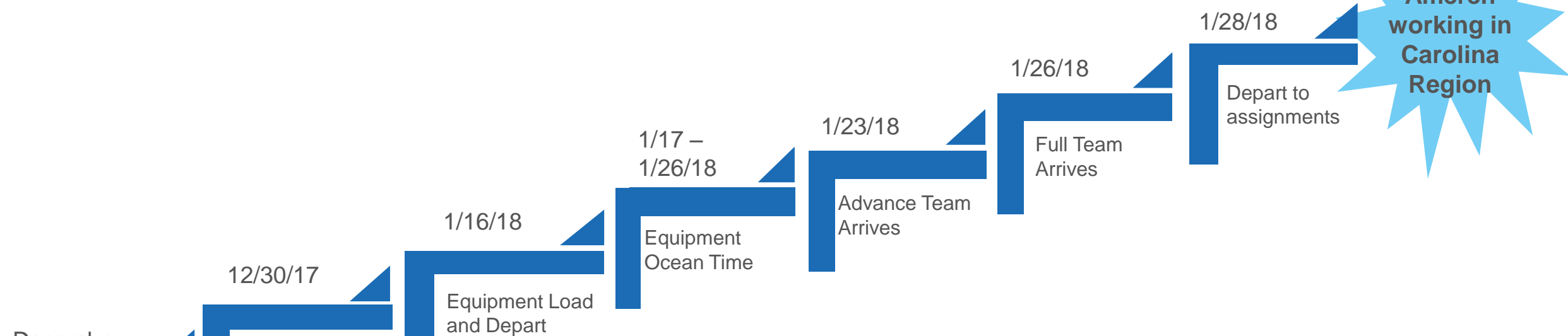
Hurricane Maria—September 20, 2017



Logistical Challenges



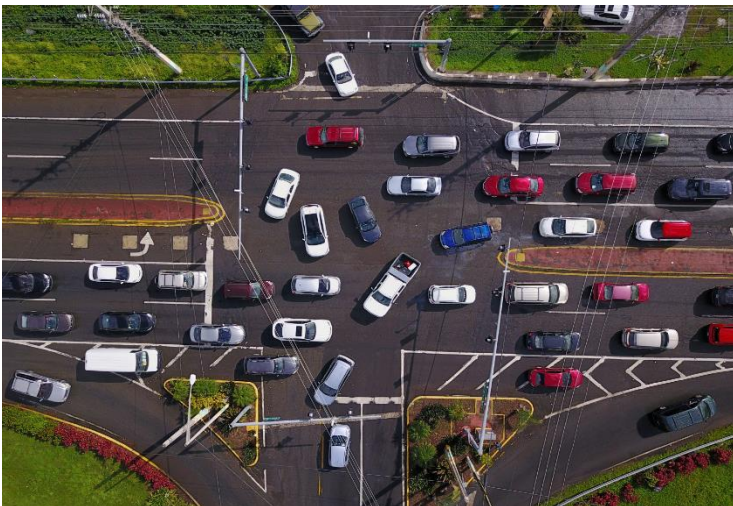
Timeline for Ameren Deployment



Challenges on the Island



Getting Around



Terrain

Our Impact



Lessons Learned /Challenges/Risks

- Safety – Driving and restoration work
- Unique first of a kind – industry deployment
- Multi agency/governmental interdependencies
- Logistics
- Legal and Finance
- Value of Unified Command
- Island conditions



Impressive Results

- Restored power to over 10,000 people in Puerto Rico
- Improved logistical proficiency that will be used in future Ameren storms
- Improved and strengthened safety proficiency and co-worker skills
- Positive cultural impacts in Ameren Missouri
- Strengthened Ameren's participation in EEI mutual assistance which will allow us to better utilize future assistance when needed on our system
- Showcased to customers Ameren's commitment of *Powering the Quality of Life*





Ameren

FOCUSED ENERGY. For life.